

G L E N M O Y E S

[glenmoyes@glenmoyes.com](mailto:glenmoyes@glenmoyes.com)

The background of the slide features a series of overlapping, flowing, organic shapes in various shades of light blue and grey. These shapes create a sense of movement and depth, with some areas appearing more prominent than others due to the layering and lighting effects.





[www.glenmoyes.com](http://www.glenmoyes.com)

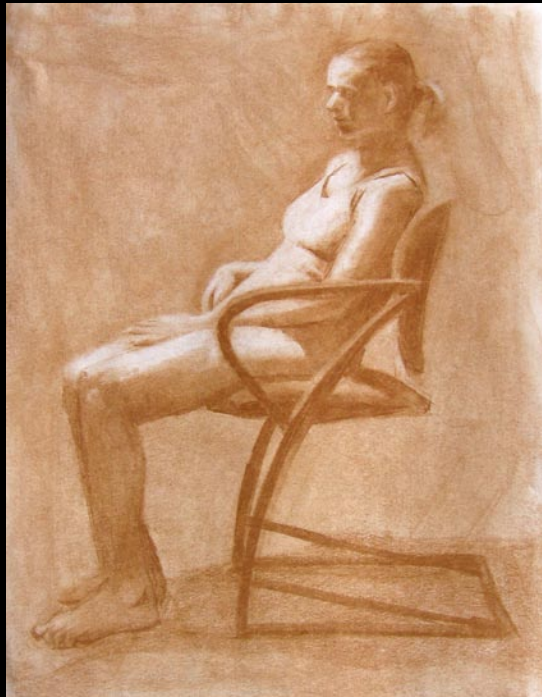






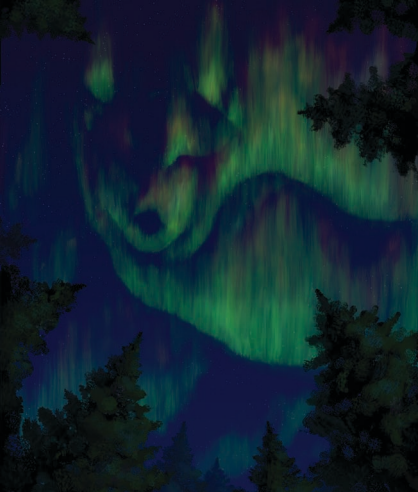


*Handwritten signature*









CALL <sup>OF</sup> THE WILD

JACK LONDON

# LOSING FAITH

HOW THE GROVE SURVIVORS LED THE  
DECLINE OF INTEL'S CORPORATE CULTURE



BOB COLEMAN

LOGAN SHRINE